

Deactivating the File Browser Start-up Option in Elements

By Jerry Koons

The following tutorial outlines a method for eliminating the File Browser option during the start-up procedure.

The File Browser (Photo Organizer) is a default when loading the Elements program and many people, including myself, prefer to have this feature deactivated for normal use. The Browser may try to “take over” when loading images from your camera or card reader and can be very annoying.

The following procedure will deactivate the File Browser for start-up.

Step One

Close all active programs.

Step Two

Click on *Start > Run* and type *msconfig* and click OK to open the *System Configuration Utility Dialog Box*.

Step Three

Click on the *Services* tab to view the available service options. See Figure 1 below.

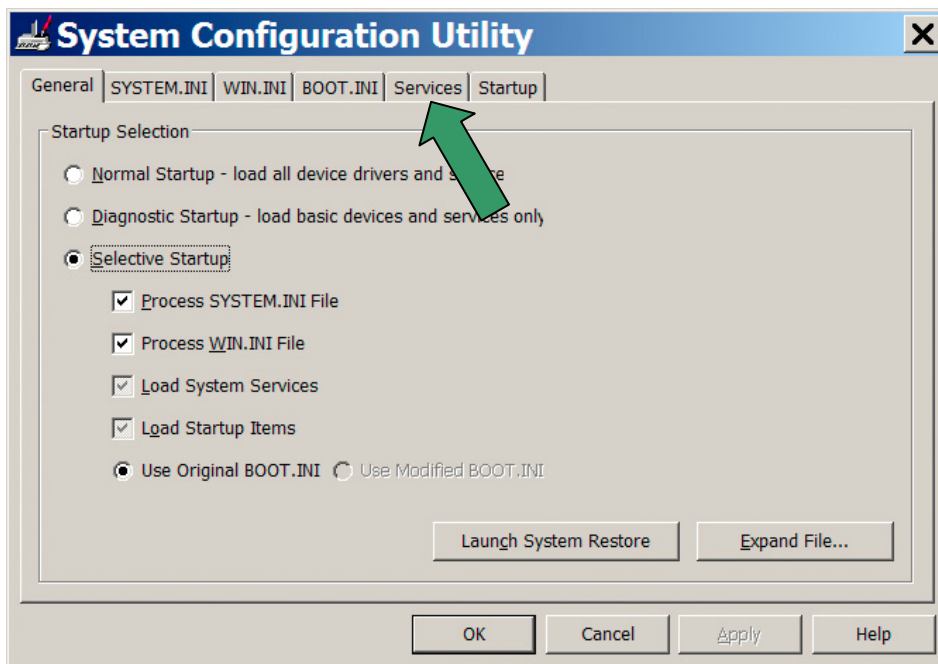


Figure 1

Deactivating the File Browser Start-up Option in Elements

By Jerry Koons

Step Four

Scroll through the listing and *Uncheck* the *Adobe File Monitor* option and click *Apply*. **DO NOT CLICK OK AT THIS TIME.** Refer to Figure 2 below.

NOTE: It may be helpful to click the checkbox for *Hide All Microsoft Services* to reduce the number of available service items.

Note also that your specific listing may differ from the ones shown in Figure 2.

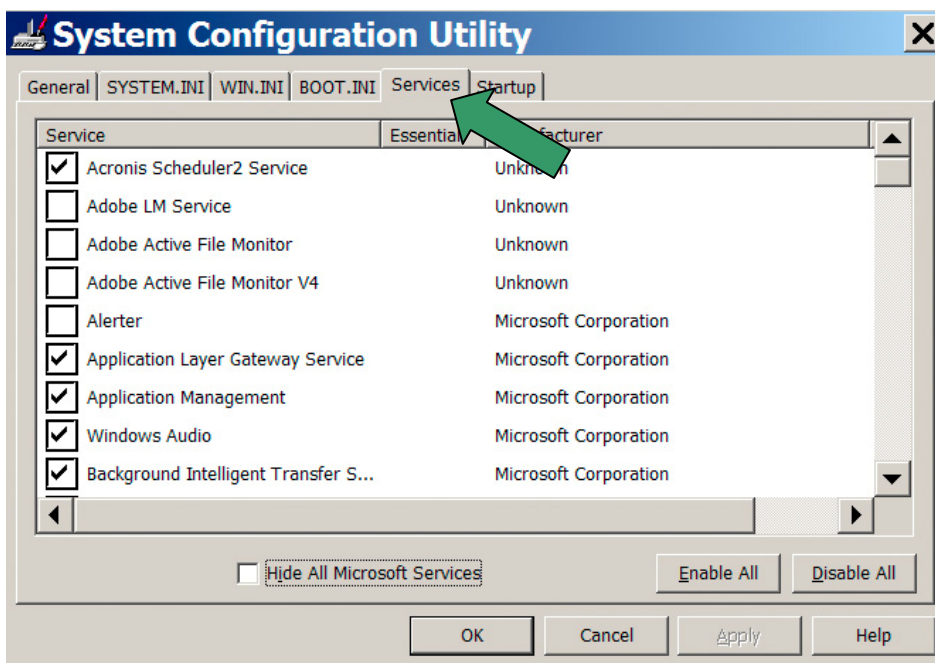


Figure 2

Deactivating the File Browser Start-up Option in Elements

By Jerry Koons

Step Five

Click on the *Startup* tab and scroll through the listing and *Uncheck* the *Adobe apdproxy* option and click *Apply*. See *Figure 3* below.

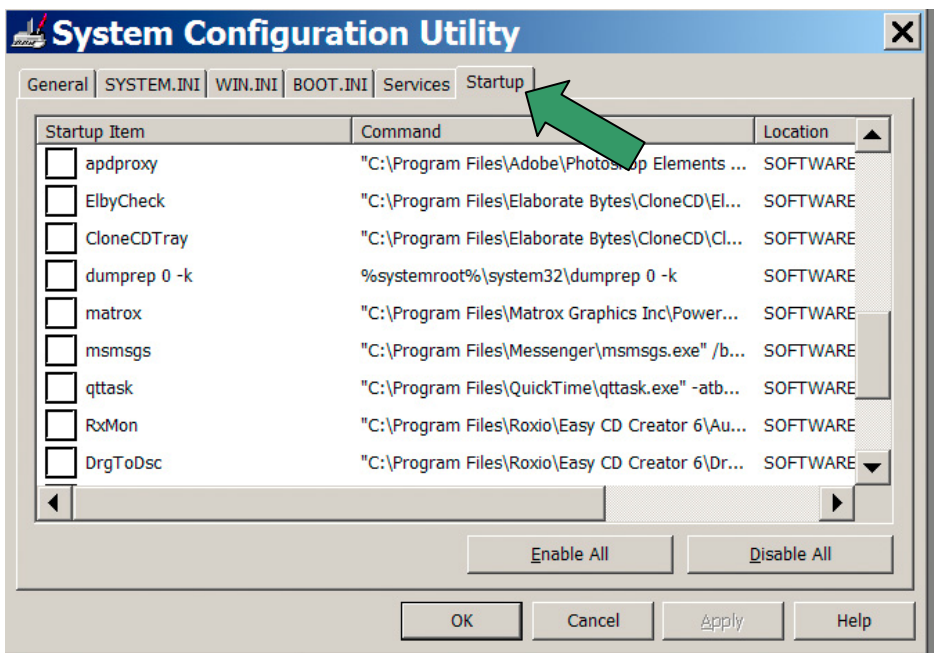


Figure 3

Step Six

Click *OK* to apply the revised settings.

A dialog box will appear stating that the computer must be rebooted for the changes to take effect. Click *Restart* to proceed with the reboot.

Step Seven

A *System Configuration Utility* dialog box (shown in *Figure 4* below) will appear after startup. Check the *Don't Show this* box and click *OK* to hide this dialog box in future startups.

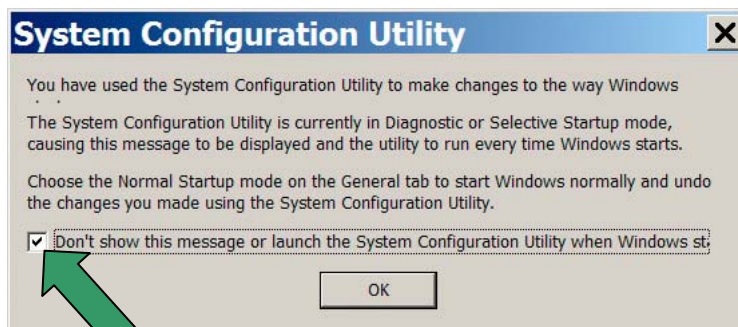


Figure 4

Your File Browser will no longer be activated at Startup.